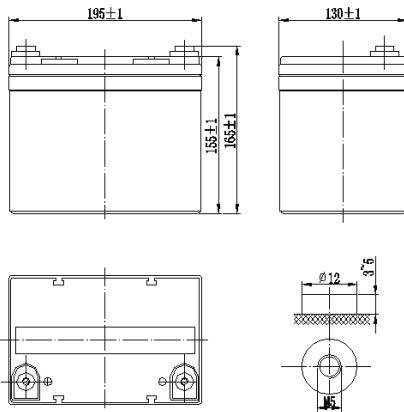




**FL12350-M**  
**(12V35Ah/10hr)**



**General Series**

General Series Valve Regulated Lead Acid batteries are designed with AGM (Absorbent Glass Mat) technology, high performance plates and electrolyte to gain extra power output for common power backup system applications widely used in the field of UPS, Emergency Lighting System.

**Application**

- Alarm System
- Cable Television
- Power tools
- Emergency Power System
- Security System
- Medical Equipment
- UPS
- Communication Equipment
- Control Equipment
- Toys

**General Features**

- Sealed and maintenance free operation.
- Non-Spillable construction design.
- ABS containers and covers (UL94HB, UL94V-0) optional.
- Safety valve installation for explosion proof .
- High quality and high reliability.
- Exceptional deep discharge recovery performance.
- Low self discharge characteristic.
- Flexibility design for multiple install positions.

**CONSTRUCTION**

Component	Positive plate	Negative plate	Container	Cover	Safety valve	Terminal	Separator	Electrolyte
Raw material	Lead dioxide	Lead	ABS	ABS	Rubber	Copper	Fiberglass	Sulfuric acid

**TECHNOLOGY PARAMETER**

Battery model	FL12350-M			
Designed Floating Life	8-10 Years			
Capacity (25°C)	20hR(1.75A, 10.8V)	10hR(3.30A, 10.8V)	5hR(5.57A, 10.5V)	1hR(22.2A, 9.60V)
	35Ah	33Ah	27.85Ah	22.2Ah
Dimensions	Length	Width	Height	Total Height
	195 ±2mm	130 ±2mm	155 ±2mm	165 ±2mm
Approx. weight (±5%)	11.2Kg (24.7 lbs)			
Internal resistance	Full charged at 25°C: Approx. 8.5mOhms			
Self discharge	3% of capacity declined per month at 25°C (average)			
Capacity Affected by Temp.(10HR)	40 °C	25 °C	0 °C	-15 °C
	102%	100%	85%	65%
Charge Voltage (25°C)	Cycle use		Float use	
	14.4-14.7V(-30mV/°C), max. Current: 8.75A		13.6-13.8V(-20mV/°C)	



**FL12350-M (12V35Ah/20hr)**

Constant current discharge ratings-amperes at 25°C

End Point Volts/Cell	5min	10min	15min	30min	1h	3h	5h	10h	20h
1.60V	130	91.1	69.4	39.0	22.2	9.31	6.08	3.40	1.80
1.65V	124	87.0	66.0	37.5	21.8	9.01	5.91	3.38	1.79
1.70V	116	82.2	62.6	35.9	21.3	8.71	5.74	3.34	1.77
1.75V	109	77.3	59.2	34.1	20.4	8.33	5.57	3.32	1.76
1.80V	102	73.2	55.8	32.4	19.4	7.96	5.40	3.30	1.75

Constant power discharge ratings-watts at 25°C

End Point Volts/Cell	5min	10min	15min	30min	1h	3h	5h	10h	20h
1.60V	234	165	126	71.4	40.9	17.2	11.3	6.36	3.38
1.65V	221	157	119	68.2	39.9	16.6	10.9	6.28	3.34
1.70V	207	147	113	64.9	38.7	15.9	10.6	6.18	3.30
1.75V	193	138	106.0	61.3	36.8	15.2	10.2	6.07	3.25
1.80V	179	130	99.4	57.9	34.9	14.4	9.83	5.92	3.21

