



# General Purpose MA12-150 (12V150AH)

## Specification

Nominal Voltage	12V	
Nominal Capacity(10HR)	150.0AH	
Dimension	Length	485 ± 3mm (19.09 inches)
	Width	170 ± 2mm (6.69 inches)
	Container Height	240 ± 2mm (9.45 inches)
	Total Height (with Terminal)	240 ± 2mm (9.45 inches)
Approx Weight	Approx 42.5 kg (93.7lbs)	
Terminal	T11	
Container Material	ABS	
Rated Capacity	156.0 AH/7.80A	(20hr, 1.80V/cell, 25 °C/77 °F)
	150.0 AH/15.0A	(10hr, 1.80V/cell, 25 °C/77 °F)
	130.5 AH/26.1A	(5hr, 1.75V/cell, 25 °C/77 °F)
	115.2 AH/38.4A	(3hr, 1.75V/cell, 25 °C/77 °F)
	93.9 AH/93.9A	(1hr, 1.60V/cell, 25 °C/77 °F)
Max. Discharge Current	1500A (5s)	
Internal Resistance	Approx 3.5m Ω	
Operating Temperature	Discharge :	-15 ~ 50°C (5 ~ 122°F)
	Charge :	0 ~ 40°C (32 ~ 104°F)
	Storage :	-15 ~ 40°C (5 ~ 104°F)
Nominal Operating Temperature	25 ± 3°C (77 ± 5°F)	
Cycle Use	Initial Charging Current less than 45.0A. Voltage	
	14.4V~15.0V at 25°C (77°F) Temp. Coefficient -30mV/°C	
Standby Use	No limit on Initial Charging Current Voltage	
	13.5V~13.8V at 25°C (77°F) Temp. Coefficient -20mV/°C	
Capacity affected by Temperature	40°C (104°F)	103%
	25°C (77°F)	100%
	0°C (32°F)	86%
Self Discharge	Leoch LP series batteries may be stored for up to 6 months at 25°C (77°F) and then a refreshing charge is required. For higher temperatures the time interval will be shorter.	



## Applications

- ◆ All purpose
- ◆ Uninterruptable Power Supply (UPS)
- ◆ Electric Power System (EPS)
- ◆ Emergency backup power supply
- ◆ Emergency light
- ◆ Railway signal
- ◆ Aircraft signal
- ◆ Alarm and security system
- ◆ Electronic apparatus and equipment
- ◆ Communication power supply
- ◆ DC power supply
- ◆ Auto control system



## Constant Current Discharge (Amperes) at 25 °C (77°F)

F.V/Time	5min	10min	15min	20min	30min	45min	1h	2h	3h	4h	5h	6h	8h	10h	20h
1.85V/cell	259.2	211.5	185.4	156.6	118.5	90.2	74.3	46.5	35.1	28.8	24.4	21.3	17.1	14.4	7.69
1.80V/cell	311.4	243.0	205.8	171.9	129.9	97.4	79.2	49.2	37.6	30.4	25.6	22.3	17.8	15.0	7.80
1.75V/cell	365.4	267.3	223.2	184.5	137.7	102.4	83.1	51.0	38.4	31.0	26.1	22.7	18.1	15.2	7.94
1.70V/cell	401.4	291.6	238.8	198.9	146.7	107.4	86.7	53.0	39.7	31.8	26.6	23.1	18.4	15.3	8.01
1.65V/cell	435.6	315.0	254.4	210.6	154.2	112.2	90.0	54.5	40.7	32.6	27.2	23.5	18.6	15.5	8.09
1.60V/cell	477.0	339.3	269.4	223.2	162.3	117.6	93.9	56.3	41.7	33.3	27.7	23.9	18.9	15.7	8.18

## Constant Power Discharge (Watts) at 25 °C (77°F)

F.V/Time	5min	10min	15min	20min	30min	45min	1h	2h	3h	4h	5h	6h	8h	10h	20h
1.85V/cell	473.9	390.7	346.0	295.2	225.9	173.4	143.2	90.3	68.3	56.3	47.9	41.8	33.7	28.5	15.2
1.80V/cell	563.3	443.6	378.9	319.3	243.8	185.8	152.0	94.8	72.8	59.1	49.9	43.6	35.1	29.6	15.4
1.75V/cell	646.9	480.1	405.8	339.4	256.3	193.4	158.7	98.0	74.0	60.1	50.9	44.2	35.5	29.9	15.7
1.70V/cell	690.9	511.9	428.2	363.1	271.5	202.1	165.1	101.7	76.4	61.4	51.7	44.9	36.0	30.2	15.8
1.65V/cell	739.2	547.9	452.6	381.6	283.1	209.3	170.1	103.9	78.0	62.8	52.6	45.6	36.5	30.5	16.0
1.60V/cell	790.7	576.7	471.4	400.0	295.9	218.1	176.5	106.9	79.6	64.0	53.4	46.3	36.8	30.8	16.1



# General Purpose MA12-150 (12V150AH)

## Specification

Nominal Voltage	12V	
Nominal Capacity(10HR)	150.0AH	
Dimension	Length	485 ± 3mm (19.09 inches)
	Width	170 ± 2mm (6.69 inches)
	Container Height	240 ± 2mm (9.45 inches)
	Total Height (with Terminal)	240 ± 2mm (9.45 inches)
Approx Weight	Approx 42.5 kg (93.7lbs)	
Terminal	T11	
Container Material	ABS	
Rated Capacity	156.0 AH/7.80A	(20hr, 1.80V/cell, 25 °C/77 °F)
	150.0 AH/15.0A	(10hr, 1.80V/cell, 25 °C/77 °F)
	130.5 AH/26.1A	(5hr, 1.75V/cell, 25 °C/77 °F)
	115.2 AH/38.4A	(3hr, 1.75V/cell, 25 °C/77 °F)
	93.9 AH/93.9A	(1hr, 1.60V/cell, 25 °C/77 °F)
Max. Discharge Current	1500A (5s)	
Internal Resistance	Approx 3.5m Ω	
Operating Temperature	Discharge :	-15 ~ 50°C (5 ~ 122°F)
	Charge :	0 ~ 40°C (32 ~ 104°F)
	Storage :	-15 ~ 40°C (5 ~ 104°F)
Nominal Operating Temperature	25 ± 3°C (77 ± 5°F)	
Cycle Use	Initial Charging Current less than 45.0A. Voltage	
	14.4V~15.0V at 25°C (77°F) Temp. Coefficient -30mV/°C	
Standby Use	No limit on Initial Charging Current Voltage	
	13.5V~13.8V at 25°C (77°F) Temp. Coefficient -20mV/°C	
Capacity affected by Temperature	40°C (104°F)	103%
	25°C (77°F)	100%
	0°C (32°F)	86%
Self Discharge	Leoch LP series batteries may be stored for up to 6 months at 25°C (77°F) and then a refreshing charge is required. For higher temperatures the time interval will be shorter.	



## Applications

- ◆ All purpose
- ◆ Uninterruptable Power Supply (UPS)
- ◆ Electric Power System (EPS)
- ◆ Emergency backup power supply
- ◆ Emergency light
- ◆ Railway signal
- ◆ Aircraft signal
- ◆ Alarm and security system
- ◆ Electronic apparatus and equipment
- ◆ Communication power supply
- ◆ DC power supply
- ◆ Auto control system



## Constant Current Discharge (Amperes) at 25 °C (77°F)

F.V/Time	5min	10min	15min	20min	30min	45min	1h	2h	3h	4h	5h	6h	8h	10h	20h
1.85V/cell	259.2	211.5	185.4	156.6	118.5	90.2	74.3	46.5	35.1	28.8	24.4	21.3	17.1	14.4	7.69
1.80V/cell	311.4	243.0	205.8	171.9	129.9	97.4	79.2	49.2	37.6	30.4	25.6	22.3	17.8	15.0	7.80
1.75V/cell	365.4	267.3	223.2	184.5	137.7	102.4	83.1	51.0	38.4	31.0	26.1	22.7	18.1	15.2	7.94
1.70V/cell	401.4	291.6	238.8	198.9	146.7	107.4	86.7	53.0	39.7	31.8	26.6	23.1	18.4	15.3	8.01
1.65V/cell	435.6	315.0	254.4	210.6	154.2	112.2	90.0	54.5	40.7	32.6	27.2	23.5	18.6	15.5	8.09
1.60V/cell	477.0	339.3	269.4	223.2	162.3	117.6	93.9	56.3	41.7	33.3	27.7	23.9	18.9	15.7	8.18

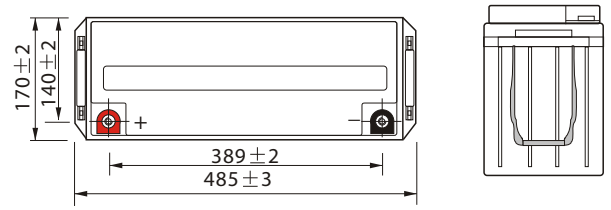
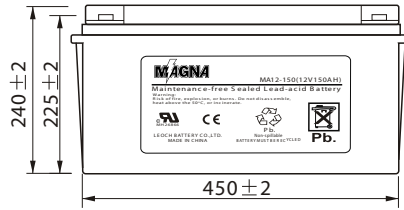
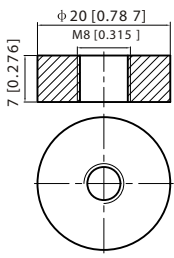
## Constant Power Discharge (Watts) at 25 °C (77°F)

F.V/Time	5min	10min	15min	20min	30min	45min	1h	2h	3h	4h	5h	6h	8h	10h	20h
1.85V/cell	473.9	390.7	346.0	295.2	225.9	173.4	143.2	90.3	68.3	56.3	47.9	41.8	33.7	28.5	15.2
1.80V/cell	563.3	443.6	378.9	319.3	243.8	185.8	152.0	94.8	72.8	59.1	49.9	43.6	35.1	29.6	15.4
1.75V/cell	646.9	480.1	405.8	339.4	256.3	193.4	158.7	98.0	74.0	60.1	50.9	44.2	35.5	29.9	15.7
1.70V/cell	690.9	511.9	428.2	363.1	271.5	202.1	165.1	101.7	76.4	61.4	51.7	44.9	36.0	30.2	15.8
1.65V/cell	739.2	547.9	452.6	381.6	283.1	209.3	170.1	103.9	78.0	62.8	52.6	45.6	36.5	30.5	16.0
1.60V/cell	790.7	576.7	471.4	400.0	295.9	218.1	176.5	106.9	79.6	64.0	53.4	46.3	36.8	30.8	16.1

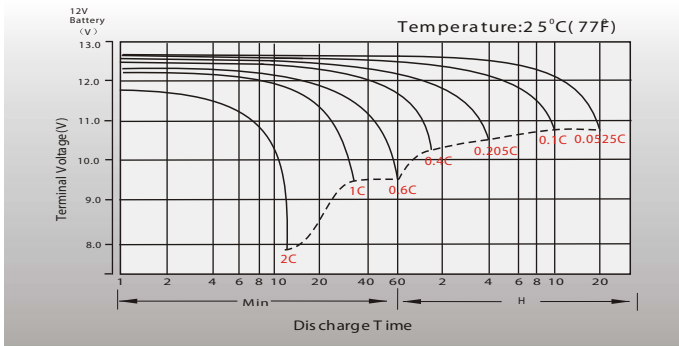
# Dimensions

## T11 Terminal

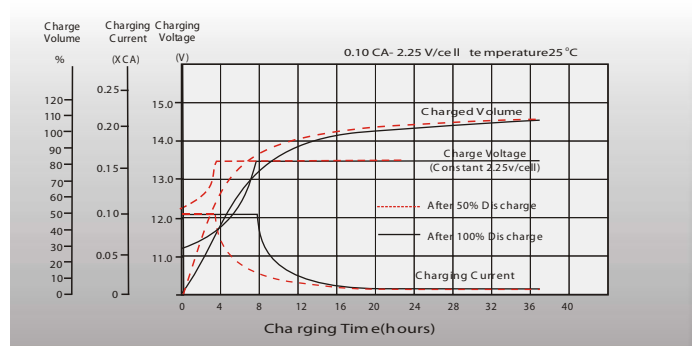
Unit: mm [inches]



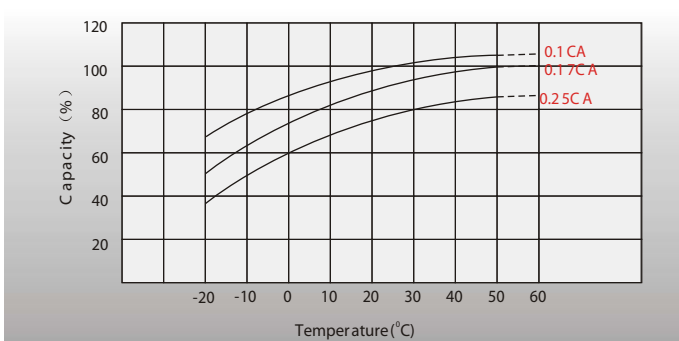
## Discharge Characteristics



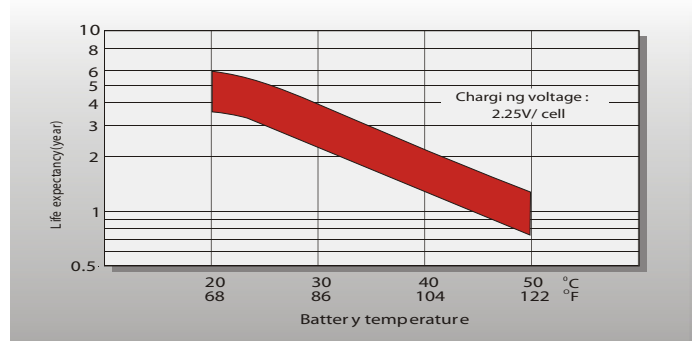
## Float Charging Characteristics



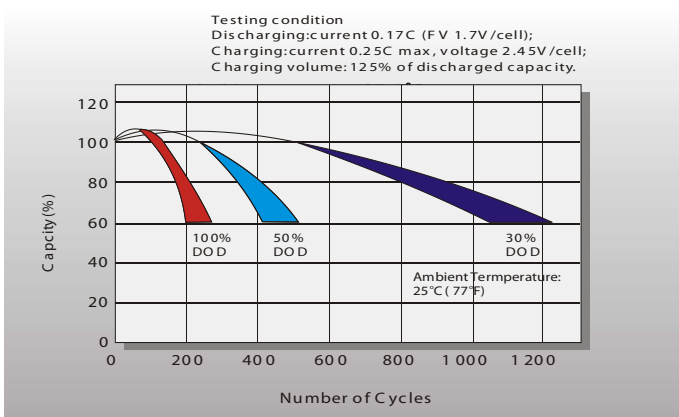
## Temperature Effects in Relation to Battery Capacity



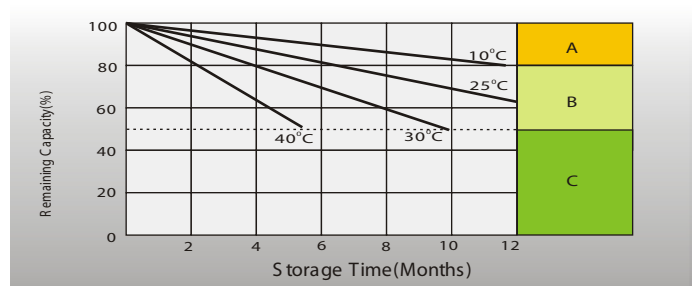
## Effect of Temperature on Long Term Float Life



## Cycle Life in Relation to Depth of Discharge



## Self Discharge Characteristics



- A** No supplementary charge required (Carry out supplementary charge before use if 100% capacity is required)
- B** Supplementary charge required before use. Optional charging ways as below:  
 1. Charged for a above 3 days at limited current 0.25CA and constant voltage 2.25V/cell.  
 2. Charged for a above 20 hours at limited current 0.25CA and constant voltage 2.45V/cell.  
 3. Charged for 8 ~10 hours at limited current 0.05 CA.
- C** Supplementary charge may often fail to recover the capacity. The battery should never be left standing till this is reached.

## Sales Office

Importado Por: COÉXITO S.A.  
 Carrera. 5 No. 61A - 95 / Cali - Colombia  
 Línea nacional de atención al cliente: 01 8000 510606  
 www.coexito.com.co

